

Technical Data Sheet

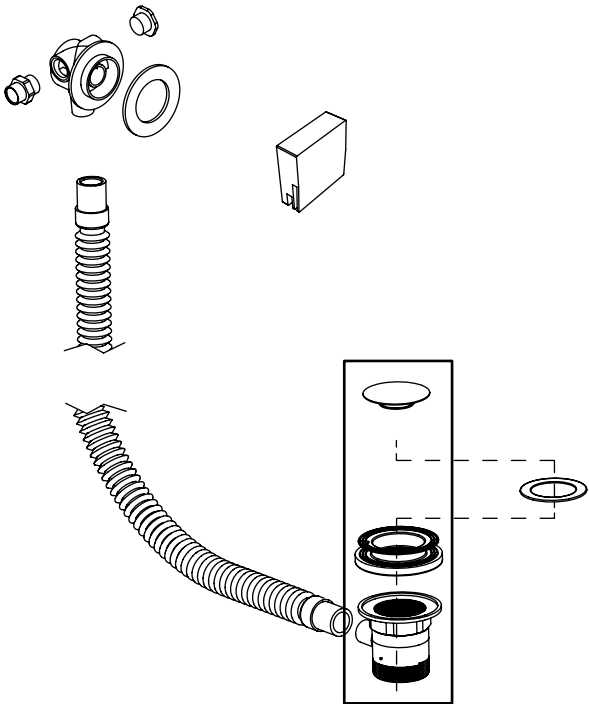
Smartflow Round Bath Filler - SVACS02

ROPER RHODES®

No.	Description	Code	Fixings Included
1	Smartflow Round Bath Filler	SVACS02	YES



Dimensions - SVACS02



Diagrams not to scale. All dimensions in mm (tolerance of +/-5mm)

FAQ	Answer
Maximum hose length	1600mm
Depth of visible bath filler part	30mm
Depth of bath filler body	43mm
Depth of overall bath filler piece combined	73mm
Diameter of bath filler hole required	43mm
Diameter of SVACS02 head	70mm
Diameter of SVACS07 head	70mm
Maximum bath thickness	18mm
Minimum bath thickness	1mm

*Dimensions are subject to change, customers are advised to measure actual product before commencing installation.

FAQs

Is the waste standard? Yes.

Technical Data Sheet

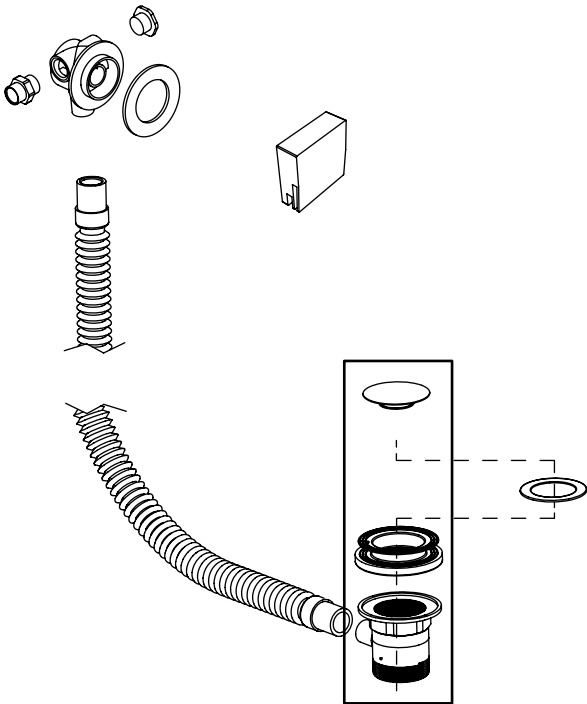
Smartflow Square Bath Filler - SVACS07

ROPER RHODES®

No.	Description	Code	Fixings Included
1	Smartflow Square Bath Filler	SVACS07	YES



Dimensions - SVACS07



Diagrams not to scale. All dimensions in mm (tolerance of +/-5mm)

FAQ	Answer
Maximum hose length	1600mm
Depth of visible bath filler part	30mm
Depth of bath filler body	43mm
Depth of overall bath filler piece combined	73mm
Diameter of bath filler hole required	43mm
Diameter of SVACS02 head	70mm
Diameter of SVACS07 head	70mm
Maximum bath thickness	18mm
Minimum bath thickness	1mm

*Dimensions are subject to change, customers are advised to measure actual product before commencing installation.

FAQs

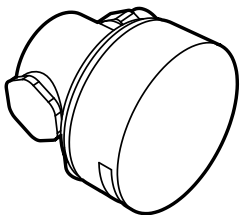
Is the waste standard? Yes.

SMARTFLOW BATH FILLER

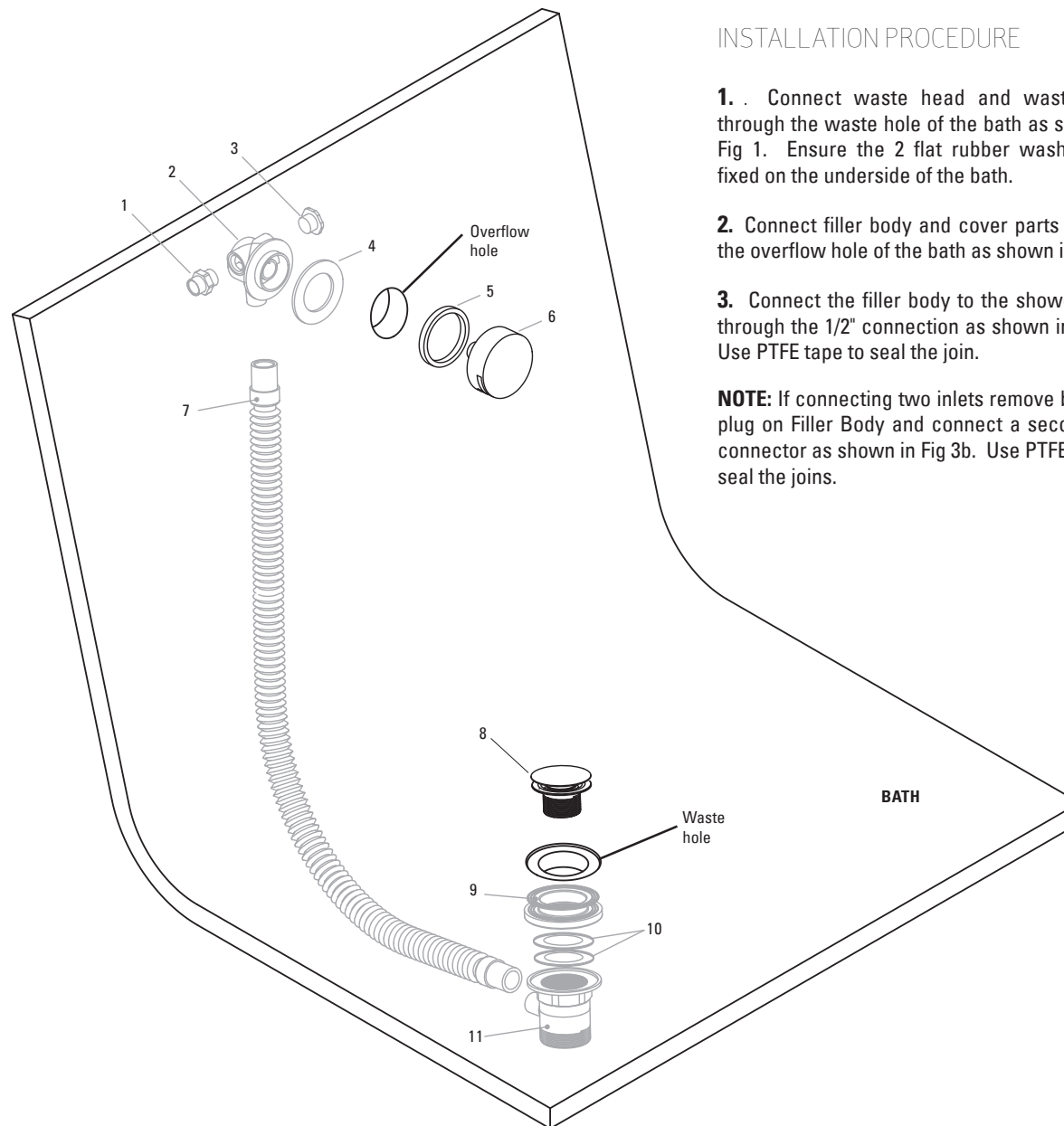
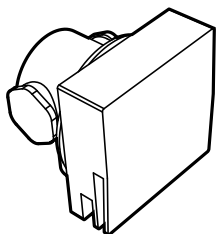
Installation & aftercare instructions

Please retain for future reference

ROUND SMARTFLOW SVACS02



SQUARE SMARTFLOW SVACS07



INSTALLATION PROCEDURE

1. Connect waste head and waste body through the waste hole of the bath as shown in Fig 1. Ensure the 2 flat rubber washers are fixed on the underside of the bath.

2. Connect filler body and cover parts through the overflow hole of the bath as shown in Fig 2.

3. Connect the filler body to the shower valve through the 1/2" connection as shown in Fig 3a. Use PTFE tape to seal the join.

NOTE: If connecting two inlets remove blanking plug on Filler Body and connect a second 1/2" connector as shown in Fig 3b. Use PTFE tape to seal the joins.

Fig 1

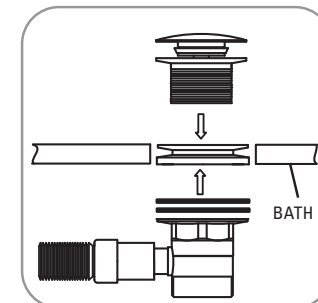


Fig 2

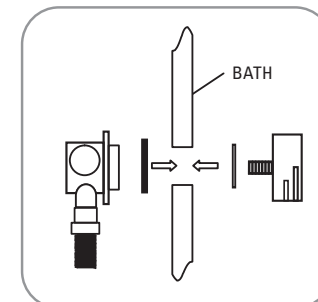


Fig 3a

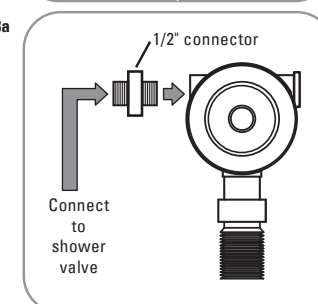


Fig 3b

